

# Nether Stowey C.E. V.C. Primary



Nether Stowey C.E. V.C Primary School  
Mill Close  
Nether Stowey  
Bridgwater  
Somerset  
TA5 1NX



01278 732 508



## Our Vision

Nether Stowey Church of England Primary School inspires a love of learning in all of us with Christian values at our heart.

Our school community is a safe, caring friendly place where everyone is welcome.

We give all children and staff the opportunity and encouragement to aim high and develop their strengths and interests.

We strive to understand, respect and value each other, our school, our community and the world we live in.

**WE ARE ACTIVE WE ARE CARING WE ARE OUR BEST**

## Welcome from the Headteacher

Dear Parents and Carers,

I wish you a very warm welcome to our school.

Nether Stowey Church of England Primary School is set in the foothills of the Quantock Hills in an Area of Outstanding Natural Beauty and rich cultural history. I am privileged to lead such a happy, prosperous school. Staff here are dedicated to ensuring all 156 pupils get a varied, exciting learning experience by first ensuring they are safe and happy. We use the local environment to enhance learning experiences and offer high quality education both in and outside the classroom.

The village of Nether Stowey has a strong community and the school sits in the very heart of this. We are lucky to have dedicated Governors from the village and surrounding area giving up their time and expertise to ensure the school aims high and delivers the best possible start to all our pupils. Our parents dedicate time to offer inspired, exciting events for the children and to raise money for the school through our Friends Of Nether Stowey School (FONSS) group.

We offer wraparound care for pupils both before and after school. Staff, parents and volunteers give their time to offer a range of clubs and after school activities to pupils from Year 1 to Year 6.

Have a look around our website to find out more. If you would like to visit, please get in touch and I'd be happy to meet you and very proud to show you around.

## Our Values

Nether Stowey Church of England Primary School values are:

**Thankfulness, Fellowship, Endurance, Peace, Trust & Charity**

These values have a half-termly focus which ties in with our learning in class and all collective worship.

**We are active. We are caring. We are our best**

## Governors

The main aim of the governing body is to help maintain and improve the school's standards of education. This the governors aim to do by:

- Working with the Head teacher and her team to set the school vision and strategic aims, agree and plan policies and to make the best use of resources.
- Governors play a significant role in monitoring and evaluating performance, acting as a critical friend and supporting and challenging where appropriate.
- Most importantly, governors are accountable to parents for the performance of the school by ensuring that the pupils receive the very best possible education.

## School Uniform

Grey skirt or tunic, white top, royal blue cardigan or sweatshirt; blue and white check or blue and white striped summer dress or royal blue, smart grey trousers, or shorts .



## Our School

Ofsted grade  
Good

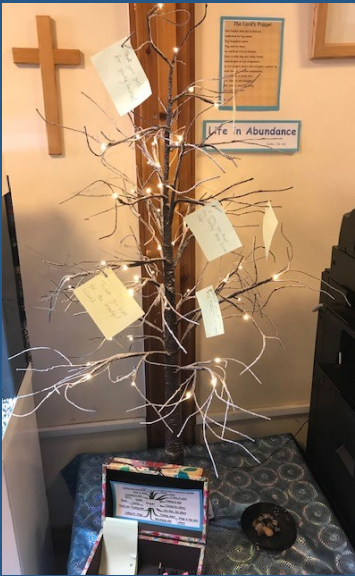
Nether Stowey Church of England Primary School was the second Free School to be built in 1813, funded by Thomas Poole. The new school building was opened in 1978 when the old building (now the village library) became too small for the growing number of children.

We are a happy village school in the heart of the local community. Our children come mainly from Nether Stowey itself, though others live in surrounding villages, and some travel daily from Bridgwater. We currently have six classes; our school is large enough to provide a wide range of activities and opportunities, whilst being small enough to enable staff to know each of our children incredibly well. Our children behave well. Visitors to the school comment on the positive, calm ethos, and happy, polite children.

Standards here are high, and improving; we are continually looking at ways of making the school curriculum more relevant, stimulating and engaging. We seek to offer a wide range of clubs and other extra-curricular opportunities.



We are active. We are caring. We are our best



Teachers and Senior Staff regularly track the progress of all our children to ensure that children have a good understanding of their learning. This enables us to support an individual or groups of children – or to provide additional challenge where necessary.



## The Curriculum

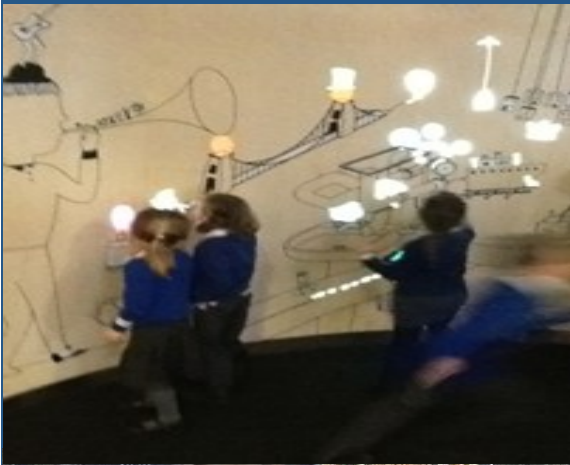
Nether Stowey Church of England Primary School is a rural school providing children from the age of 4 to 11 with a high quality education.

We believe that children learn best when they are happy, secure and confident; we are proud of our children and their achievements, be they academic, social or sporting. We aim to provide a wide range of opportunities, in the belief that our children will find areas in which they will succeed; high self-esteem is often the pre-requisite of successful learning.

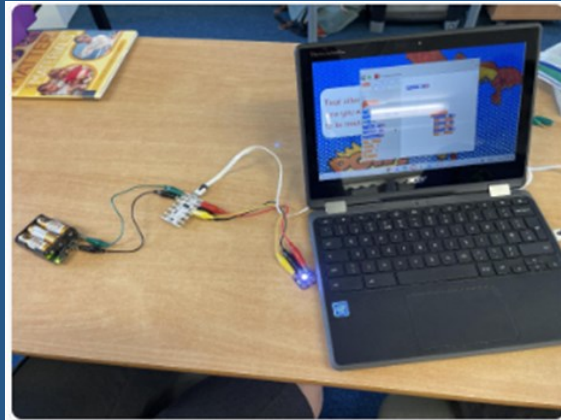
Children are taught in classes of roughly 30, or less in the younger classes. All classes have a dedicated Teaching Assistant who plays a crucial role in the children's learning. Classes may be either single age, or mixed-age, depending on Year group sizes.

We believe that the curriculum should be stimulating and creative and, wherever appropriate, practical. This learning will often take place in our beautiful school grounds or in the local community. Learning may be organised along discrete or thematic areas; usually aspects of English and Maths are taught discretely ensuring a firm grasp of the basic skills, whilst other subjects are combined into carefully organised themes or projects. As children progress through the school, they are increasingly encouraged to take greater responsibility for their own learning; this is an essential attitude necessary for success at Secondary School and beyond.

Classrooms are stimulating, lively and well organised. A warm and positive ethos is apparent together with high expectations of behaviour and effort. Above all, children here enjoy their learning!



We are active. We are caring. We are our best



## English

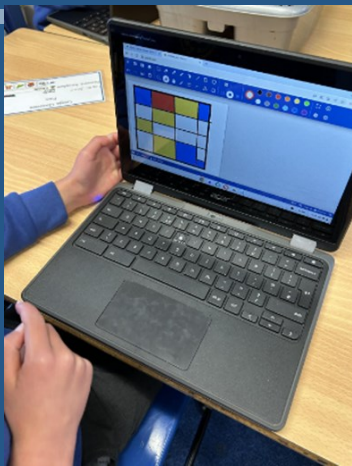
Competence in Literacy enables children to communicate effectively at home, at school and in the wider world and leads to improved life opportunities. At school, the skills of listening, speaking, reading and writing are taught to enable children to organise and express their thoughts and to access the knowledge and ideas of others.

In the Early Years Foundation Stage and throughout Key Stage One there is a strong emphasis on speaking and listening and phonics teaching which begin to give the children the skills needed to read and write.

As children progress through the school we aim to nurture children to develop these skills to become confident in their ability to communicate freely, effectively and imaginatively in spoken and written English.

The school teaches English through a text based approach using Power or Reading strategies. The school also adopts Nelson handwriting.

*"English is the language of the future, the language of the computer. English is the most important tool you'll ever need, no matter what career you choose. You have the right to English. Make it your right!" Benjamin Zephaniah*



## Teaching of mastery

The Mastery learning approach we take here at Nether Stowey allows children to learn new skills and understand new concepts before making sure they can use these in a range of different ways. Maths isn't all about pages of calculations in the real world – it is tied up in real-life contexts such as measuring for new carpets, or keeping a household budget. We try to emulate these situations here at school so that nothing phases the children because they are secure in number, place value and calculation and used to applying this knowledge in lots of



## Maths

At Nether Stowey Primary School it is our aim to provide children with a well-rounded understanding of mathematics so that they may operate with success, not only in study, but also in life. We achieve this by embracing the practicality of the subject and providing numerous opportunities for them to experience how relevant it is in everyday situations and professions.

As learners they are encouraged to be positive, believe in their capabilities and to be enthusiastic problem solvers capable of working both independently and as part of a team.

We believe good learning involves building upon skills in a structured way so that children are constantly improving their understanding of how mathematics works and how it is applied. By doing this, each child should experience a good level of “challenge” within their work and be able to enjoy numeracy as the fascinating and vitally important subject it is.

We are active. We are caring. We are our best



### Our school prayer

Dear God,  
Every day we'll learn and grow,  
Safe and caring as we go.  
Playing fairly, helping hands,  
We will try to understand;  
Those who're different, those the same,  
All this through Lord Jesus' name.  
Help us, Lord to aim so high,  
In our learning we will try  
To see our strengths and to improve  
We ask your help, your strength and  
love.  
Amen

*Written by all the pupils in October 2016*

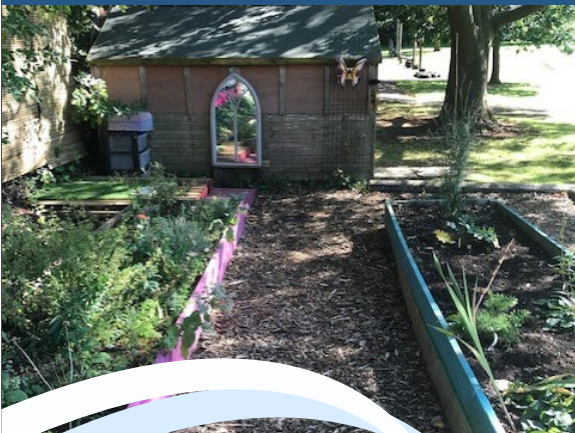
## Science

Our aim is to develop engaged, independent, creative learners. Wherever possible, Science lessons are linked to our Curriculum Experiences (Topics), although some areas of study will be taught discretely. The Science curriculum is divided into three main aims – 'Scientific knowledge and conceptual understanding', 'Nature, processes & methods of science' and 'Uses & implications'. We take the children's learning outside as much as possible to make it meaningful, practical and engaging. We encourage the children to develop enquiring minds by giving them opportunities to talk through their ideas, ask questions, make predictions and carry out simple investigations.

## Religious Education

Our RE Policy and curriculum is drawn up in accordance with the Diocese of Bath & Wells' Agreed Syllabus "Awareness, Mystery and Value". This is an enquiry-based curriculum, focusing on Christianity and other major world faiths. Wherever possible, this study is based on the child's experience and perceptions.

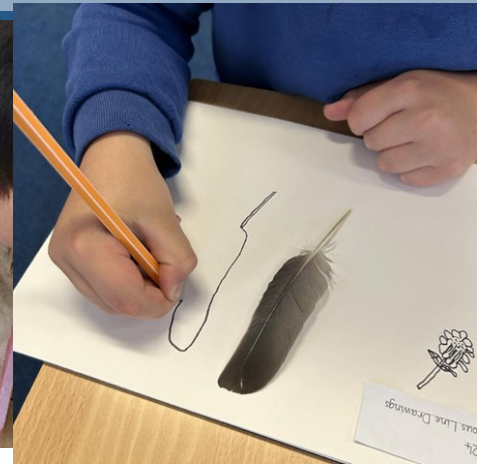
As we are a Church School, we have very close links with our local church, our vicar visits the school frequently to work with the children and to lead Acts of Worship. Every fortnight members of the church community come into school to lead 'Open The Book' assemblies, which bring bible stories to life. Our local village church provides a brilliant resource for learning!



We are active. We are caring. We are our best

## What's Taught :

- English (Literacy)
- Mathematics (Numeracy)
- Computing (ICT) taught throughout the Curriculum
- Science
- RE (Religious Education)
- Modern Foreign Language (French)
- Art
- Geography
- History
- Music
- Design and Technology
- Music



## Curriculum Subjects Years 1-6

Children at Nether Stowey CE VC Primary School are taught in line with the National Curriculum 2014

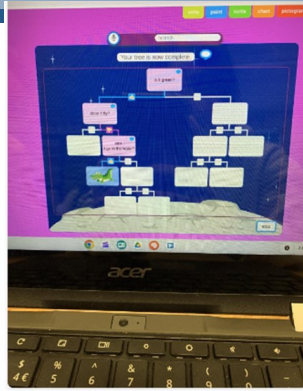
Whilst there are no set rules, children tend to be taught English and Maths as separate subjects (discretely) as they move up through the school. Teaching often takes a cross-curricular approach to ensure learning is purposeful and put into an engaging context. For instance, Phonics are taught in daily, discrete sessions for all children at Foundation Stage and across Key Stage 1, whilst children usually apply these skills in lessons organized around projects or themes.

Themes or projects (known as Curriculum Experiences) are carefully matched against the Key Skills of the National Curriculum; we map these as children move up through the school to ensure balance. They are also carefully linked to the needs of the pupils within a class to ensure high levels of engagement and the best possible outcomes.

We closely monitor the progress that every child makes in their Reading, Writing and Maths as they move up through the school. Teachers assess children's understanding regularly so that teaching and learning activities are appropriately pitched. We look to balance high expectations of our children with a detailed knowledge of them as individuals. We see parents as key in helping children to meet their potential, and aim to actively involve them throughout this process.



We are active. We are caring. We are our best



## Curriculum Experiences

Science is often taught discretely, but can be taught alongside other subjects through cross-curricular topics (Experiences); sometimes these themes are followed by all classes in each Key Stage. We aim to make these as creative and active as possible, with visits, visitors and learning through practical activities. Whilst activities and lessons are carefully planned by the class teachers, a feature of this approach is to plan flexibly enabling children to pursue aspects that are of particular interest to them.

Learning skills are carefully matched against the “key skills” in the National Curriculum, so that as they progress up through the school we can be sure that all children receive a broad and balanced curriculum.

## Outdoor area

Nether Stowey School boast an extensive outside area

Our outdoors area provisions deepens the children's learning outside of the classroom. The children enjoy bug hunting, den building, story circles and much more. This allows the children to work collaboratively together and take their learning outdoors.



We are active. We are caring. We are our best

## Swimming

Every child is offered the opportunity to swim for a 5 week session per year at the Quantock Lodge pool in line with National Curriculum requirements.



## Educational visits and Residential

Visits and residentials are an important and enjoyable part of school life. Visits are usually arranged to support learning in the classroom; often they will be in the local community (walking visits) and sometimes will venture further afield when classes will visit sites of interest that require coaches or minibuses. We will always notify you when an outing is planned for a more substantial walking visit (for instance, when the class will be out of school over lunch, or when a change of clothes may be needed), or when minibus or coach transport is required. Your permission will be asked (via and a reply slip), and a Parental contribution requested for such a visit.

The Education Reform Act states that a school cannot compulsorily charge for visits, and in the past, the PTA (FONSS) have generously agreed to subsidise the cost of more expensive visits. As a rule however, staff keep the costs of visits to a minimum wherever possible, and although no child will be excluded if a parental contribution is not made, if insufficient money to cover the cost of the visit is not raised, the outing may have to be cancelled.



## School Newsletters

School newsletters are sent home twice a term and a class newsletter once a term. Newsletters are sent home by e-mail. Newsletters are also available on the school's WEDUC

## Parents' Evenings

Parents Evenings provide an opportunity for you to discuss your child's progress with their class teacher. These are held during the autumn and summer terms.

## Assemblies and Act of Worship

As we are a Church of England School, we are lucky to enjoy very good links with the Diocese of Bath & Wells and St Mary's Church in the village, with our Rector regularly visiting the school to lead weekly Acts of Worship. Every fortnight other members of the church lead an 'Open the Book' assembly based on stories from the Bible. Other whole-school assemblies are based around an annual cycle of themes and usually include prayers and songs. During a weekly Celebration Assembly, children share their achievements with the rest of the school.



## The School Day

On arrival at school, children go directly to their classrooms.

We have a rolling start at school in all classes. There will be tabletop Maths activities for children to practice their skills in order to be ready to start the official school day at 9am.

Morning school is from 9am to 12 noon for Key Stage 1 children and from 9am to 12.35pm for Key Stage 2 children. Afternoon school is from 1.20pm to 3.30pm for both Key Stages. Children who attend the before-school Wraparound club will be brought to school by the Wraparound staff. It is important that your child arrives at school on time every day, as repeated lateness can cause disruption to the class routine and often leads to anxiety and stress in your child. Punctuality is an important quality to foster at this stage of your child's education.

Staff are responsible for your child during school hours, which includes 10 minutes before the start of school. Your child should not arrive in school before 8.45am.

It is important that children attend school regularly. If your child is going to be absent from school please could you telephone the school office by 9.30am. A parental note explaining the reason for the absence should be brought to school on the child's return.

## Meetings with Parents

The staff and I work hard to be approachable to parents, and are happy to meet with you throughout the school year to discuss any questions or concerns that you may have regarding your children's education. This may not be possible however at very short notice – especially before school when teachers are busy preparing for the school day. Should you like an appointment, please contact the school, and a convenient time will be found. We also offer regular drop-in sessions where you can meet me and other parents for an informal chat and refreshments. If you have babies or young children you are welcome to bring them along to these drop-in sessions.

This is a breastfeeding-friendly school and if you need to feed your baby we will be happy to accommodate you.



## Behaviour

Behaviour is communication. Before a child can thrive, they must have their social, emotional and mental health supported. Once we get this right for each child, they are better able to regulate their emotions, work well with others and achieve well. Staff here at school are trained in de-escalation techniques, Emotion Coaching and have a thorough understanding of attachment and trauma and how this can affect any child.

The school has a successful Behaviour Policy, drawn up with the involvement of staff, Governors, the children and parents. This document aims to promote positive behaviour across the school, and is available on the school website under 'key information' for you to read should you wish to do so.

The children respond very well to our high expectations of behaviour and, as a result, behaviour is good. We believe that children's behaviour in school is most likely to be good when home and school work together, and consistency is achieved. We look for your support in promoting positive behaviour. Consequently, only with your full co-operation as parents can we create a purposeful, happy environment where children are able to be happy and thrive.

We are active. We are caring. We are our best

## Free School Meals

Free school meals will be provided, subject to the usual qualifying criteria, for those children attending on a part-time basis if the lunch-break is included as part of the child's educational experience. Please ask for a form from the school office to find out whether your child can qualify for this.

## Universal Infant Free School Meals

Your child will be entitled to a free meal until the end of Year 2. This is for all pupils, but is separate to Free School Meals entitlement above.

## How much does it cost and how to pay?

The price of a school meal freshly prepared on site is currently free for Reception and Key Stage 1 pupils (up to the end of Year 2) £3.00 for Key Stage 2 pupils .



Monday	Tuesday	Wednesday	Thursday	Friday	
Chicken Stir Fry Vegetarian Stir Fry Pasta Bar with salad bar Apple Tart with Custard Fruit Yoghurt	Vegetable Cannelloni with garlic bread Homemade Soup with a Bread roll Jacket Potato with salad bar Fruity Yoghurt granola pots Fruit Yoghurt	Roast Chicken Quorn Roast Carrots, Broccoli, Peas, roast potatoes and gravy Sandwich with salad bar Sticky Toffee Pudding and custard Fruit Yoghurt	Spaghetti and Meatballs, Vegetarian Meatballs With sweetcorn, Jacket Potato with salad bar Ice Cream wafers with Fruit Fruit Yoghurt	Fish Fingers Vegetarian Fingers With Chips and Beans Sandwich with salad bar Chocolate Chip Shortbread Fruit Yoghurt	Week 1 and 5
Monday	Tuesday	Wednesday	Thursday	Friday	
Ravioli in tomato sauce with Crusty bread Cheese Toastie with salad Sandwich with salad bar Iced Buns Fruit Yoghurt	Chicken Fajitas Vegetable Fajitas Served with Salad bar and sweet potato wedges Jacket potato with salad bar Choux Buns Fruit Yoghurt	Roast Beef Quorn Roast Carrots, Broccoli, Peas, roast potatoes and gravy Pasta Bar with salad bar Banana Cake with Custard Fruit Yoghurt	Sausage, Mash onion gravy Vegetarian Sausage with Mash and Gravy vegetables Jacket Potato with salad bar Jelly Fruit Yoghurt	Chicken Nuggets Vegetarian Nuggets With Chips and beans Sandwich with Salad Bar Fruity fingers with fruity dip Fruit Yoghurt	Week 2 and 6
Monday	Tuesday	Wednesday	Thursday	Friday	
Salmon Pasta Bake Ham & Cheese Pie Sandwich with salad bar Fruit Salad with cream Fruit Yoghurt	Beef Stew and Dumplings Vegetarian Stew Jacket Potato with salad bar Banana Split Fruit Yoghurt	Roast Turkey Quorn Roast Carrots, Broccoli, Peas, roast potatoes and gravy Sandwich with salad bar Chocolate Fudge Cake with Chocolate Sauce Fruit Yoghurt	Chicken Balls with sweet chilli sauce, with rice Quorn nuggets with sweet chilli sauce with rice Jacket Potato with salad bar Chocolate Crunch Fruit Yoghurt	Cheese and tomato Pizza , chips and beans Egg with Chips and Beans Pasta with salad bar Traffic Light Jelly and Fruit Fruit Yoghurt	Week 3 and 7

## Nether Stowey School Meals Service

School meals are cooked on the premises in our fully equipped kitchen which is regularly inspected and praised for its high standard of quality and food hygiene. There is great value in a child staying in school at lunchtime. The children have time to play, to talk together, to establish friendships, and generally learn to get along with one another. Good healthy food is a priority. We are working to ensure that packed lunches as well as hot dinners are nutritious so that all our children are healthy eaters.

We aim to provide a healthy, well balanced meal that is good value for money and enjoyable. We are most fortunate to have a great team of cooks who are dedicated to providing this, and use their considerable skills to make interesting and tasty meals that appeal to children.

The Kitchen Staff and Lunchtime Supervisors help the very young children. This ensures they are not put off by having to make a choice. They are also watched as closely as possible to make sure they get a good selection, eat what they choose and get good value for money. The Kitchen Staff will try to cater for individual needs, and there is a happy and relaxed atmosphere in the hall during the lunchtime break.

We are active. We are caring. We are our best



## After School Clubs

Various clubs are run, voluntarily, by teachers, parents and sometimes qualified staff, throughout the year. They include such activities as football, netball, cricket, multi-skills, rounders, choir and Art & Craft. Your child will be given information about these clubs as appropriate. We shall appreciate your co-operation in making any necessary arrangements for the collection of your child at the end of each after-school activity, which will normally be at 4.30 p.m. It must be pointed out that care and supervision cannot be guaranteed for children who might wait behind after school for brothers or sisters attending clubs. However, please remember you can book them



## Wrap Around Care Club

The school runs a successful breakfast and after-school Wrap Around Care Club based in the school library . This involves supervised activities for children (art and craft, cooking, homework help, games, toys and jigsaws, television and DVDs) offering parents a safe and secure environment in which to leave their children. It runs from 7.45 am to 8.45 am and 3.30 to 5:30pm. The Club works on building positive relations with children and their families and caters for all their individual needs. The setting for the club is 'child-led' and the staff are always welcoming. There are different areas of space for the children to explore their surroundings and choose an area that suits them.

There is a choice of cereals or toast available at the breakfast club and a choice of a snack for children attending the club after 4.30 p.m. Drinks are always made available. Individual dietary requirements can be accommodated.

Children can be booked in for whole sessions or part sessions. The price list found on the website gives further details of cost and the cancellation policy.

If you are interested in your child attending the Wrap Around Care Club please ask at the school office for a registration form and book via WEDUC.

We are active. We are caring. We are our best

## Homework

It is vital that you listen to your child read every day where possible, as this will form a solid foundation for other learning. As they get older, children will be given homework tasks, linked to the themes being followed in the classroom. With younger children this may be in the form of phonics & spellings to practice, or short writing and Maths activities. As children move up through Key Stage 2, these tasks will become longer, Children will always be given a number of days to complete the task; class teachers will outline homework expectations in their letters home to parents. Please see our Homework Policy for more

## Complaints Procedure

We hope that parents will feel able to discuss concerns with child's teacher or myself; the vast majority of issues can usually be resolved in this informal and open way. However, under exceptional circumstances, parents are able to write formally to the Chair of Governors at the school, or if this is not sufficient to contact the LA at County Hall Taunton.



## ADMISSIONS ARRANGEMENTS

Parents are always welcome to make an appointment to visit Nether Stowey and take a look around.

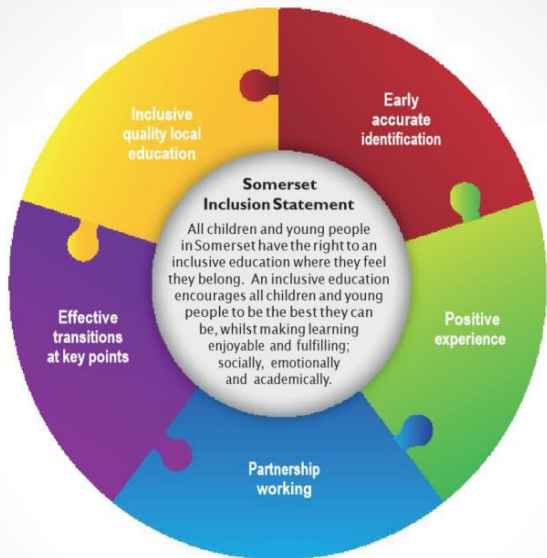
For further information on admissions please see the County website ([www.somerset.gov.uk/admissions](http://www.somerset.gov.uk/admissions)).

### New starters

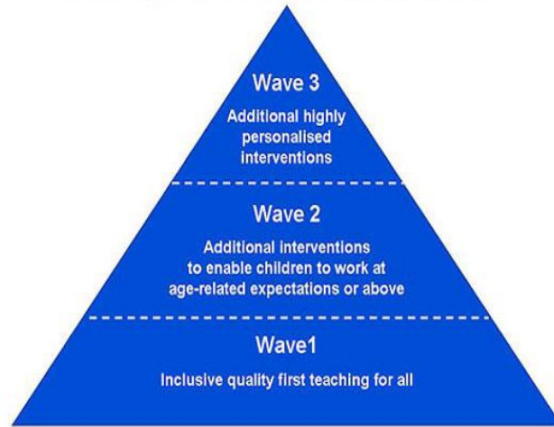
If your child will be aged 4 before September, you need to apply for a school place on line via the Somerset school admissions site ([www.somerset.gov.uk/admissions](http://www.somerset.gov.uk/admissions))



We are active. We are caring. We are our best



## Waves of Intervention Model



A *graduated response*: All pupils will be provided with high quality teaching that is differentiated to meet the diverse needs of all learners.



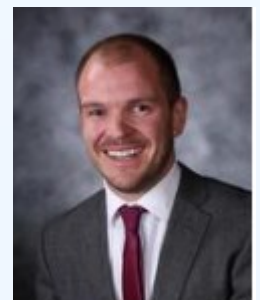
## Special Educational Needs & Disabilities

All teachers are teachers of children with Special Educational Needs and Disabilities (SEND). Class teachers are responsible for identifying the needs of the pupils in their care and ensuring their needs are suitably met through the provision they provide.

The school is committed to supporting pupils with special educational needs in accordance with the new Code of Practice. We aim to provide effective support for pupils with a wide range of needs ensuring that all pupils have access to the full curriculum and are fully included in the school community. Work is set to match individual needs and abilities and additional provision is made as appropriate in consultation with parents.

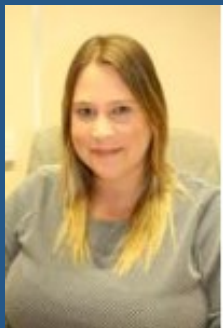
Mr. Terry Luke is our SENCo. The SENCo has day-to-day responsibility for the operation of the SEND policy and co-ordination of specific provision made to support individual pupils with SEND, including those who have EHC plans. He will be very happy to support you in any way he can to secure the best outcomes for your child.

Please visit the SEND area of the school website for details of the school offer and local offer.



We are active. We are caring. We are our best

## Safeguarding Lead



## Safeguarding Deputy



## Safeguarding Deputy



## Safeguarding and Welfare

Nether Stowey CE VC Primary School recognises that the safety and welfare of children is paramount and that we have a responsibility to protect children in all our school's activities. We take all reasonable steps to ensure, through appropriate procedures and training, that all children, irrespective of sex, age, disability, race, religion or belief, sexual identity or social status, are protected from abuse.

All staff are trained to safeguard children and we take this very seriously indeed. If you ever have a concern about safeguarding, please contact the school and speak to one of our leaders. We will always listen and take your concerns seriously.

If we have a question for you regarding something we have seen or heard relating to your child we will ask you about this. Please work with us to ensure your child is safe and happy. These conversations can be uncomfortable, but we always have your child's best interests at heart. Safeguarding is everybody's business.

## Attendance

This is a successful school and your child plays their part in making it so. For our children to gain the greatest benefit from their education it is vital that they attend regularly and so all children should be at school, on time, every day the school is open unless the reason for the absence is unavoidable. We aspire all children to achieve 100% attendance. Regular attendance leads to children making good progress and having high outcomes.

## Meet



C.E.D.R. I.C.

(Come . Every. Day. Remember .I'm. Counting)

We are active. We are caring. We are our best

# Contact Us

**Head teacher & Safeguarding Lead:**

**Mrs. Chloe Holt**

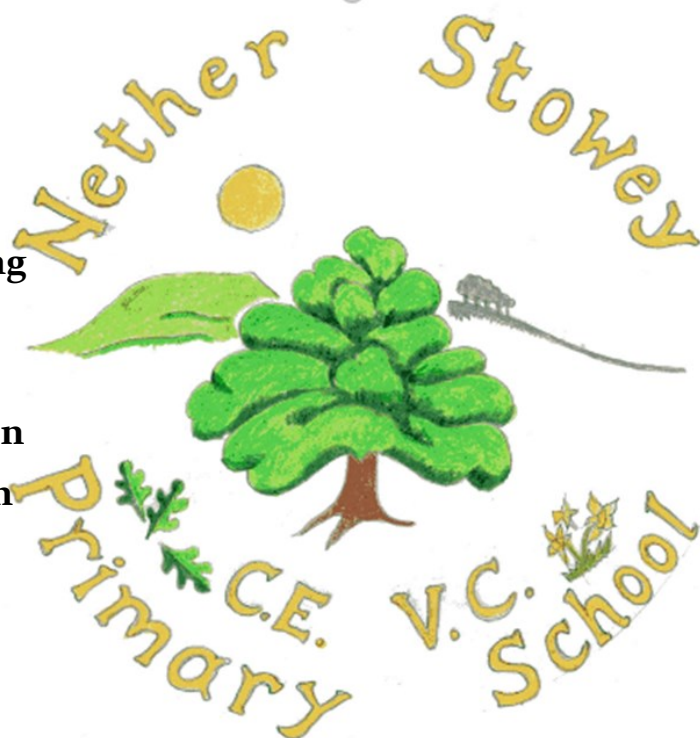
**Deputy Head teacher , SENCO & Safeguarding Lead: Mr. Terry Luke**

**School Administrator: Mrs. Gemma Atherton**

**School Finance Officer Mrs. Heather Hilman**

**Chair of Governors: Mrs Pauline Carpenter**

**Mrs Zoe Hicks**



## Nether Stowey C.E V.C. Primary School

Mill Close,

Nether Stowey,

Bridgwater,

Somerset.

TA5 1NX.

Tel: (01278) 732508

Fax: (01278) 733860

Email: [netherstowey@educ.somerset.gov.uk](mailto:netherstowey@educ.somerset.gov.uk)

Website: [www.netherstowey.somerset.sch.uk](http://www.netherstowey.somerset.sch.uk)

Facebook: [www.facebook.com/netherstowey](http://www.facebook.com/netherstowey)

